

IMF-System

Screws for InterMaxillary Fixation



Distributed by:

AVINENT[®]
Digital Health

 **titamed.**

Table of content

I. Introduction	4
II. Features	5
III. Product information	6

IMF Screws

I. Introduction



INDICATIONS

The binding of the maxillary and mandibular teeth together to immobilise the jaw in patients with a mandibular fracture or during orthognatic surgery.

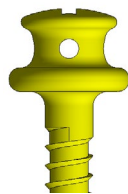


PRINCIPLES

1. Simple and efficient
2. Compatibility
3. Small in all dimensions
4. Two different types of screwheads

TYPES

Type 1 with holes



- Screwhead with 4 holes
- Titanium Alloy
- Lengths 8, 10 and 12 mm

Type 2 without holes



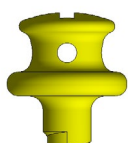
- Small head without holes
- Titanium Alloy
- Lengths 8, 10 and 12 mm

IMF Screws

II. Features



Type 1 with holes



- 4 Rounded holes for easy and fast wire insertion
- Flat plateau under screwhead to prevent elastics to move
- Cross-pin slot for easy pickup and insertion
- High neck for a strong fixation
- Smooth neck for protection of the soft tissue

Type 2 without holes



- A very small head without holes for less invasion
- Flat plateau under screwhead to prevent elastics to move
- Cross-pin slot for easy pickup
- High neck for a strong fixation
- Smooth neck for protection of the soft tissue



- Selfdrilling tip for easy placement
- Excellent fixation



The cross-pin screwhead is compatible with the existing instruments of the Titamed Gamma System

SCREWHEAD

SELFDRILLING TIP

BOX





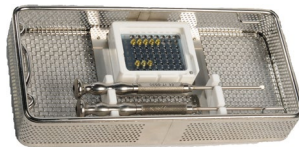
INSTRUMENTS

IMF Screws

III. Product information



IT0530



IT3008

Cat. No.	Description
IT0530	Screwdriver Cross-Pin 2.0 and 2.3
IT3008	Inox container IMF
IT135005	Twist drill 1.3mm - Stop 5 mm

IMF SCREWS



Cat. No.	Description	
S20-90-008	Cross-pin IMF bonescrew, selfdrilling	with holes
S20-90-010	Cross-pin IMF bonescrew, selfdrilling	with holes
S20-90-012	Cross-pin IMF bonescrew, selfdrilling	with holes



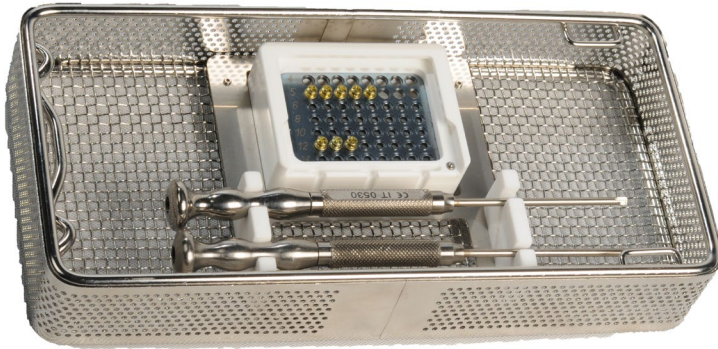
Cat. No.	Description	
S20-91-008	Cross-pin IMF bonescrew, selfdrilling	small head, without holes
S20-91-010	Cross-pin IMF bonescrew, selfdrilling	small head, without holes
S20-91-012	Cross-pin IMF bonescrew, selfdrilling	small head, without holes

IMF Screws

III. Product information



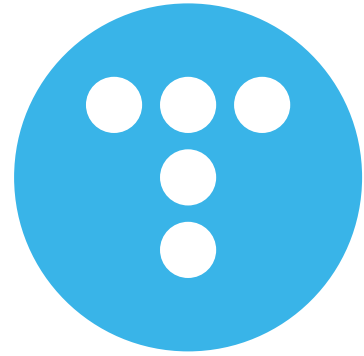
BOX CONTENT



IT3008

IT3008	Cat. No.	Description	Max. quantity
↘	IT0530	Screwdriver Cross-Pin 2.0 and 2.3	2
↘	IT135005	Twist drill 1.3mm - Stop 5 mm	2
↘	S20-90-008	Cross-pin IMF bonescrew, selfdrilling	8
↘	S20-90-010	Cross-pin IMF bonescrew, selfdrilling	8
↘	S20-90-012	Cross-pin IMF bonescrew, selfdrilling	8
↘	S20-91-008	Cross-pin IMF bonescrew, selfdrilling	8
↘	S20-91-010	Cross-pin IMF bonescrew, selfdrilling	8
↘	S20-91-012	Cross-pin IMF bonescrew, selfdrilling	8





Carretera de Navarcles, 107
Pol. Industrial Santa Anna I - Apartado 20
08251 Santpedor (Barcelona) - España
T. (+34) 902 38 38 48 - F. (+34) 93 827 38 73
www.avinent.com - avinent@avinent.com

version: G1317

Distributed by:

AVINENT[®]
Digital Health

 **titamed.**